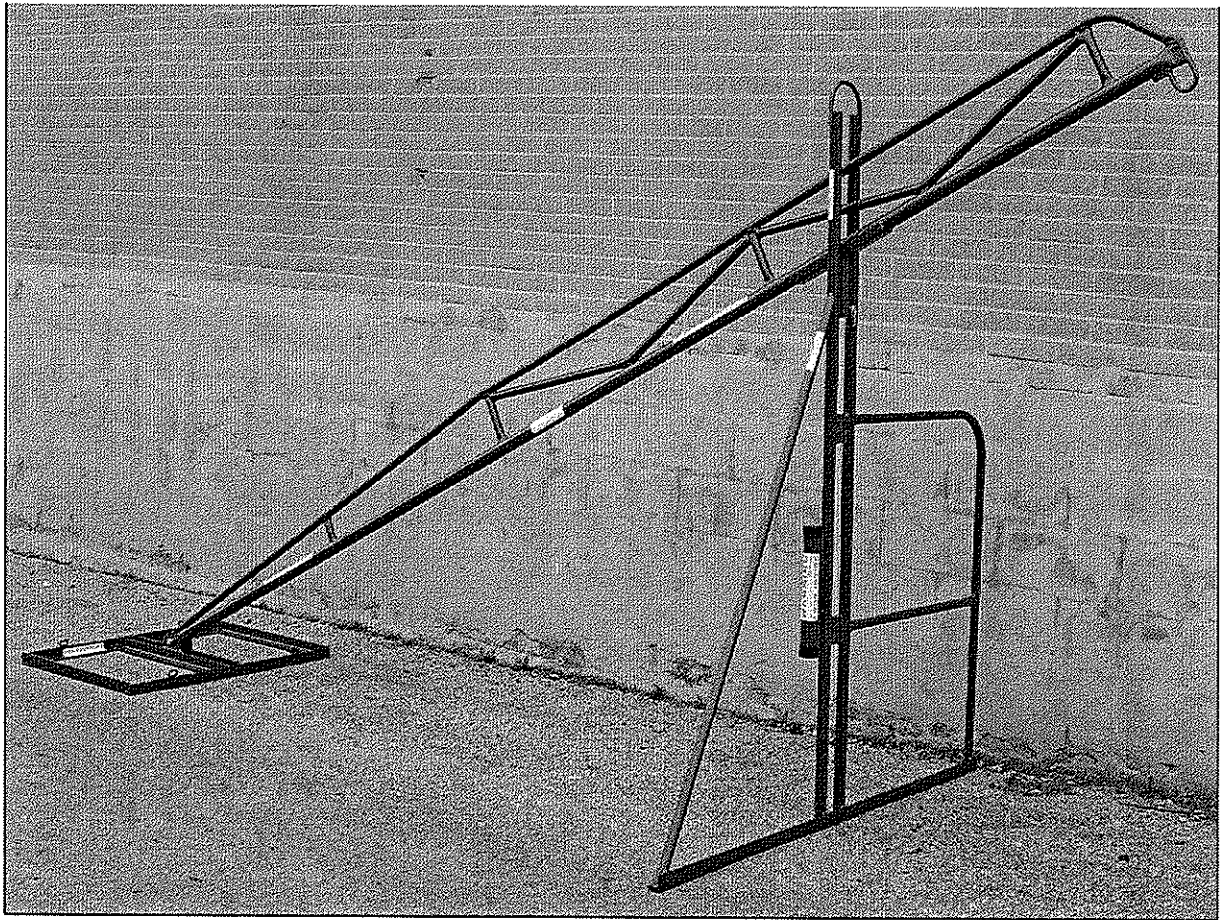


## “A” FRAME HAND HOIST

Instruction and safety information

Read before operating the hand hoist



88 Signet Drive  
Weston, ON M9L 1T3  
Tel: (416) 744-2050  
Fax: (416) 744-4247

• Pickering, ON

• Toronto (Bloor St.), ON

• Toronto (Wade Ave.), ON

• Weston (Weston Rd.), ON

• Weston (Signet Dr.), ON

• Barrie, ON

• Oakville, ON

• Hamilton, ON

• London, ON

• Edmonton, AB

• Calgary, AB

• Winnipeg, MB

• Bensenville (Chicago), IL

## **⚠ Warning**

- Do not erect the hand hoist near overhead cables, electrical power lines or wires.
- Erect hand hoist on firm and level roof.
- Tighten all bolts and nuts securely and clip all locking pins or hand hoist failure will occur under load and may cause damage or injury.
- Always keep the instruction manual with the hand hoist for reference.
- Do not exceed the 300 lbs rate capacity of the hand hoist.
- Minimum ballast weight must be kept at 2 to 1 ratio. (2 pounds of ballast for 1 pound of load)
- Inspect all joints, rope and connections before each use. Replace if damaged.

Warning labels have been included on the equipment. If the warning labels wear off, please request new ones.

Misuse of the hand hoist may result in injury or damage. SPAR-Marathon provides instructions for its safe use and relies on the purchaser to ensure that these instructions are given to the personnel who will actually be using the equipment.

It is the responsibility of the purchaser to ensure that the personnel operating the hand hoist is trained in the proper operating procedures and all safety regulations.

The employer shall instruct each employee in the recognition and avoidance of unsafe conditions and the regulations applicable to work environment to control or eliminate any hazards or other exposure to illness or injury.

Regulations governing the use, selection and maintenance of personal protective and lifesaving apparatus regulations must be followed.

The SPAR-Marathon hand hoist is designed and manufactured for hand hoisting material only. Any other use of this equipment will void any warranty or responsibility, expressed or implied, on the part of the manufacturer.

The hand hoist should be operated by experienced personnel only. It is a good idea to barricade the hoisting area and to keep unauthorized persons away from it.

## **Introduction**

SPAR-Marathon hand hoist is designed for easy operation, providing excellent lifting performance and easy maintenance. The hand hoist is shipped in sections for ease of transport and can be assembled with no special tools.

## **Specification**

Maximum hoist capacity	300 lbs
Operation	hand
Overhangs roof	36 in
Hoist maximum height	84 in
Boom weight	52 lb
Mast weight	45 lbs
Ballast tray weight	26 lbs
Ballast weight required	600 lbs
Ballast block required (55 lbs each)	11 pieces

Specifications are subject to change without notice.

## **Assembly of hand hoist**

**⚠Warning** Tighten all bolts and nuts securely and clip all locking pins or hand hoist failure will occur under load and may cause damage or injury.

Assemble the hoist on firm and level roof deck, well back from roof edge.

Do not set up hoist over doorway.

If possible, position the hand hoist as least 10 feet from the roof corner.

Raise all sections to the roof and place them far away from the roof edge.

Attach the ballast tray to the boom leg and tighten with the bolt and nut provided.

Raise the mast assembly in an upright position.

Slide the boom through the top slot of the mast assembly.

Slide the tube on the boom body into the pipe on the mast assembly.

Lock the mast assembly with the boom with the clip pin provided.

Hook the gin wheel into the ring on top of the boom.

Loop the rope through the gin wheel.

Move the hand hoist assembly to the roof edge. Make sure the front leg is standing straight up.

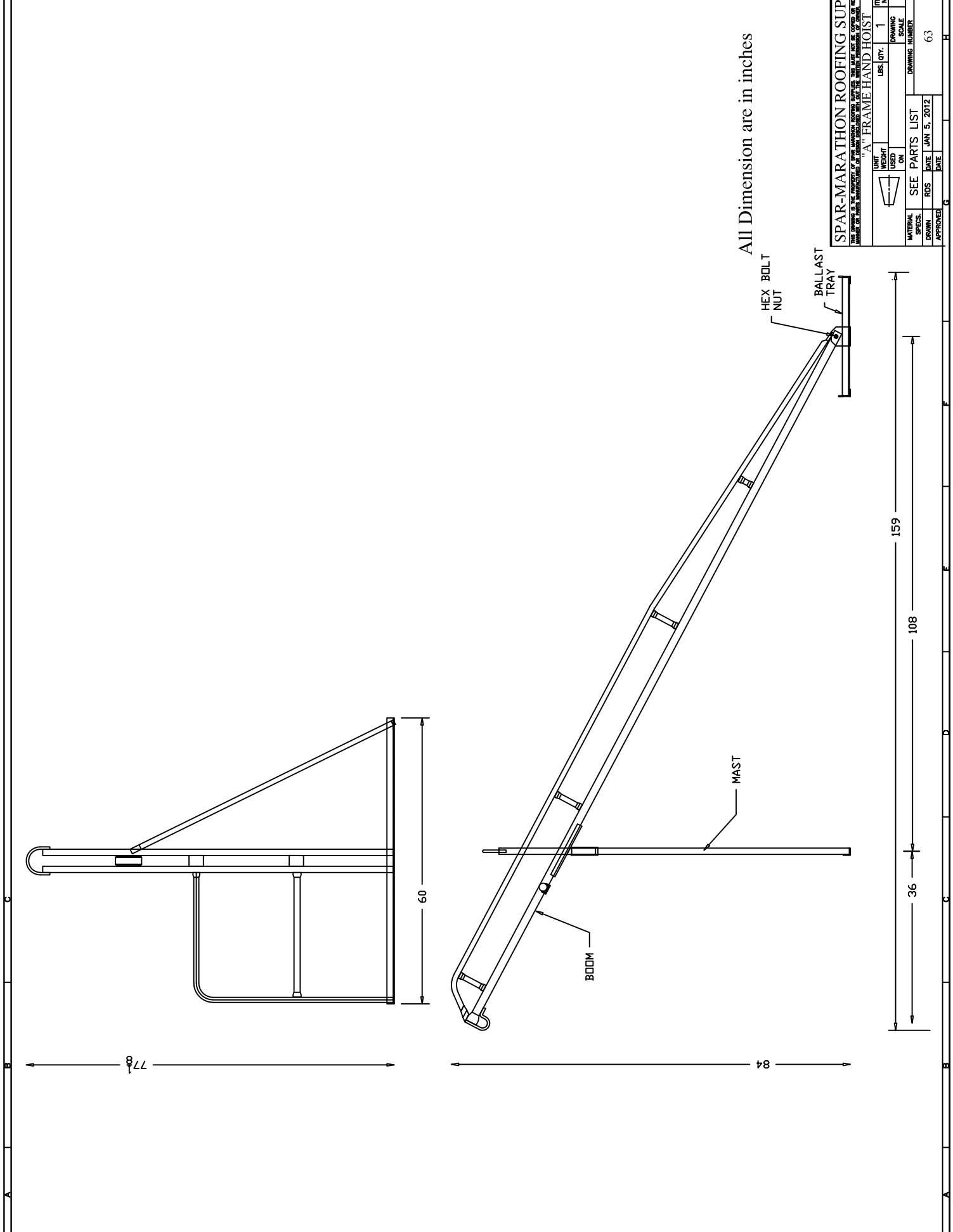
Load the ballast tray with counterweight.

### **Operation a gin wheel from the ground**

When operate a gin wheel on the ground, the total load value is different from the weight being lifted. The ratio is 1 to 2 (1 lbs of weight being lifted is equal to 2 lbs of load to the hoist)

### **Parts list**

Description	Parts #	Qty
Boom	HH3-01	1
Mast	HH3-02	1
Ballast tray	HH3-03	1
Clip pin	HH3-04	1
1/2 – 13 grade 5 hex bolt	HH3-05	1
1/2 – 13 nylon insert nut	HH3-06	1



All Dimension are in inches

SPAR-MARATHON ROOFING SUPPLIES			
MANUFACTURED BY SPAR-MARATHON ROOFING SUPPLIES, INC. 1000 W. 10TH ST. ST. LOUIS, MO. 63103			
"A" FRAME HAND HOIST			
UNIT WEIGHT LBS. PER L.F.	QTY.	ITEM NO.	REV.
	1		0
DRAWING SCALE		DRAWING NUMBER	
1:6		63	
MATERIAL SPECS. SEE PARTS LIST			
APPROVED	DATE	DATE	REV.
	JAN 5, 2012	JAN 5, 2012	0