

## GP5 PATCH PLANER

Instruction and safety information

Read before operating the planer



88 Signet Drive  
Weston, ON M9L 1T3  
Tel: (416) 744-2050  
Fax: (416) 744-4247

- Pickering, ON
- Toronto (Bloor St.), ON
- Toronto (Wade Ave.), ON

- Weston (Weston Rd.), ON
- Weston (Signet Dr.), ON
- Barrie, ON

- Oakville, ON
- Hamilton, ON
- London, ON

- Edmonton, AB
- Calgary, AB
- Winnipeg, MB
- Bensenville (Chicago), IL

## **WARNING**

Misuse of this equipment may result in damage or injury. It is the responsibility of the purchaser to ensure that the personnel operating the machine are trained in the proper operating procedures and all safety regulations.

The employer shall permit only those employees qualified by training or experience to operate equipment and machinery.

The employer shall instruct each employee in the recognition and avoidance of unsafe conditions and the regulations applicable to the work environment, to control or eliminate any hazards or other exposure to illness or injury.

Regulations governing the use, selection, and maintenance of personal protective and lifesaving equipment as stated in safety regulations shall be followed.

Do not operate on a roof without a perimeter warning system or barrier.

## **SAFETY PRECAUTIONS**

1. When using this equipment, full-face shield and proper clothing should be worn to protect the operator from flying debris.
2. Do not operate this equipment within 10 feet of the roof edge.
3. When on-deck equipment is being used, perimeter warning lines must be set up 10 feet from the roof edge, and around all roof openings.
4. Follow local code requirements.
5. Never leave machine unattended when engine is running.
6. Shut off the engine before refueling, checking, making adjustment or repairs.
7. Keep hands and feet clear of moving parts at all times.
8. Do not operate unless all guards and shields are in position.

## **OPERATOR TRAINING**

1. Before being allowed to use this or any piece of equipment, the operator should first fully understand all proper operating procedures. Special attention should be paid to the control locations and functions, all warning messages, and possible hazardous operations conditions.

2. Proper training includes informing the operator as to the correct protective clothing and safety equipment that should be worn while operating the equipment. Clothes that fit properly (that is, not too tight and not too loose) includes a long sleeve shirt buttoned at the cuff, long cuff less pants, steel toe safety shoes and safety glasses or full face shield. These items should be mandatory apparel for the operator. If work is being done at a level higher than the level at which the planer is being used, a hard hat should be worn.
3. Before using the machine on a roof, the operator should become familiar with the controls, safety features, and the overall 'feel' of the machine; on the ground, preferably in an open area with no vehicular or pedestrian traffic.

### **INTENDED USE**

This machine is designed to be used to loosen the embedded gravel on built-up roofs by a series of carbide tipped cutting pins fixed to a 5 1/4 inch wide rotating steel drum. This machine can cut a 4 1/2 inch path in one pass. The drum rotates in a direction that will pull the machine forward as the pins contact the gravel. It is necessary to hold back on the machine to ensure gravel removal.

### **OPERATION**



#### **Warning**

- Make certain that the drum cover and belt cover are in place and all bolts and nuts are tightened securely. Never under any circumstances operate the machine without the drum cover and the belt cover bolted firmly in place.
- Never put hands, feet or any parts of body close to the rotating drum underneath the drum cover when engine is running.
- Never leave the machine unattended when the engine is running.


#### **Note:**

- If there is a significant amount of loose gravel or other debris on the roof, it will be necessary to sweep the loose material up before starting to scrape out the embedded gravel. This will prevent the machine from clogging up and ensure proper operation. This will also avoid flying stones and excessive wear of the carbide pins.
- Make certain that the engine crankcase is filled with oil and that the engine has been serviced as per the engine instruction.

1. Loosen the nut on the height adjustment hand screw on the machine body and turn the hand screw all the way in. Then back off 3 turns counter clockwise.

2. Start the engine as per the engine instructions.
3. Allow engine to warm-up and adjust the throttle control to desired speed.
4. Press handle down slowly to cut a path, (make certain to hold on to the machine since the machine will pull forward by the cutting action) then check the cutting depth.
5. Adjust the hand screw to set desired cutting depth. Turn clockwise to decrease the cutting depth. Turn counter-clockwise to increase the cutting depth.
6. Tighten the nut while holding the hand screw after desired cutting depth is found.
7. To start scraping, push down on handle slowly until machine starts to cut into the roof, then move forward along the path. Make certain to hold on to the machine since the machine will pull forward by the cutting action.
8. To stop scraping, slowly release pressure on the handle and let the planer rise up automatically. This will allow the cutting pins to rotate freely without cutting the roof.
9. Stop the engine if not intending to use the planer immediately.

## CUTTING PIN REPLACEMENT

 **Warning** Never open the drum and belt covers when the engine is running.

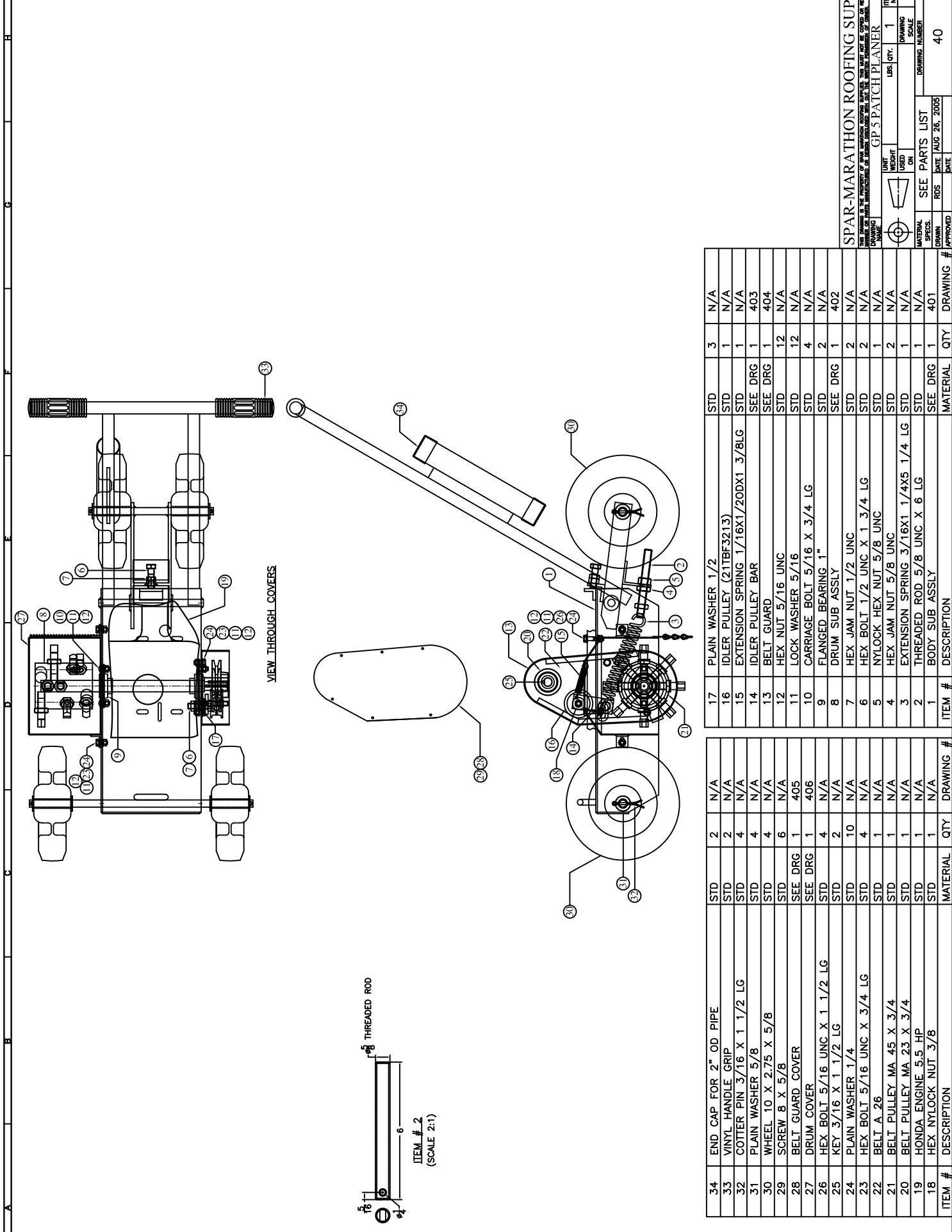
The carbide tipped cutting pins are held in position with jam nuts.  
To replace the pin,

1. Stop the engine and remove spark plug cable from spark plug.
2. Open the drum cover and loosen the jam nut on the pin with deep socket or wrench. Unscrew the pin and remove from the drum.
3. Remove the jam nut from the old pin and rotate the jam nut all the way into the new pin.
4. Screw the new pin fully into the drum. Then rotate the pin backwards if necessary so that the carbide tip is facing the front of the machine.
5. Hold the pin with a wrench and then tighten the jam nut securely with another wrench.
6. Install the drum cover back in place and tighten all bolts and nuts securely.

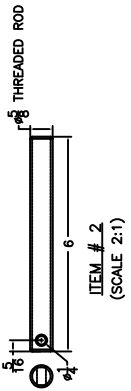
## MAINTENANCE

Lightly oil the pivoting point of rear wheel assembly weekly.

For engine maintenance, carefully follow the engine maintenance instructions that are provided with this machine.



VIEW THROUGH COVERS



ITEM #	DESCRIPTION	MATERIAL	QTY	DRAWING #
34	END CAP FOR 2" OD PIPE	STD	2	N/A
33	VINYL HANDLE GRIP	STD	2	N/A
32	COTTER PIN 3/16 X 1 1/2 LG	STD	4	N/A
31	PLAIN WASHER 5/8	STD	4	N/A
30	WHEEL 10 X 2.75 X 5/8	STD	4	N/A
29	SCREW 8 X 5/8	STD	6	N/A
28	BELT GUARD COVER	SEE DRG	1	405
27	DRUM COVER	SEE DRG	1	406
26	HEX BOLT 5/16 UNC X 1 1/2 LG	STD	4	N/A
25	KEY 3/16 X 1 1/2 LG	STD	2	N/A
24	PLAIN WASHER 1/4	STD	10	N/A
23	HEX BOLT 5/16 UNC X 3/4 LG	STD	4	N/A
22	BELT A 26	STD	1	N/A
21	BELT PULLEY MA 45 X 3/4	STD	1	N/A
20	BELT PULLEY MA 23 X 3/4	STD	1	N/A
19	HONDA ENGINE 5.5 HP	STD	1	N/A
18	HEX NYLOCK NUT 3/8	STD	1	N/A
17	PLAIN WASHER 1/2	STD	3	N/A
16	IDLER PULLEY (21TBF3213)	STD	1	N/A
15	EXTENSION SPRING 1/16X1/20DX1 3/8LG	STD	1	N/A
14	IDLER PULLEY BAR	SEE DRG	1	403
13	BELT GUARD	SEE DRG	1	404
12	HEX NUT 5/16 UNC	STD	12	N/A
11	LOCK WASHER 5/16	STD	12	N/A
10	CARRIAGE BOLT 5/16 X 3/4 LG	STD	4	N/A
9	FLANGED BEARING 1"	STD	2	N/A
8	DRUM SUB ASSLY	SEE DRG	1	402
7	HEX JAM NUT 1/2 UNC	STD	2	N/A
6	HEX BOLT 1/2 UNC X 1 3/4 LG	STD	2	N/A
5	NYLOCK HEX NUT 5/8 UNC	STD	1	N/A
4	HEX JAM NUT 5/8 UNC	STD	2	N/A
3	EXTENSION SPRING 3/16X1 1/4X5 1/4 LG	STD	1	N/A
2	THREADED ROD 5/8 UNC X 6 LG	STD	1	N/A
1	BODY SUB ASSLY	SEE DRG	1	401

SPAR-MARATHON ROOFING SUPPLIES  
 DRAWING NO. GP5 PATCH PLANNER  
 UNIT WEIGHT: 1 LBS. QTY. 1  
 WEIGHT ON: 1  
 DRAWING SCALE: 1:5  
 DRAWING NUMBER: 40  
 DATE: AUG 26, 2005  
 APPROVED: [Signature]