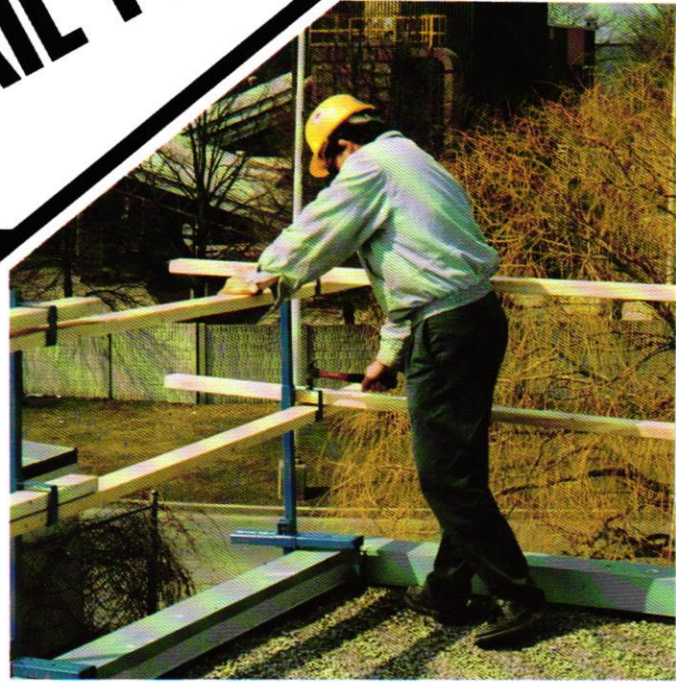


THE PRACTICAL ANSWER TO EDGE PROTECTION THE SAFETY ROOF RAIL PR 100

- **PR 100** meets and exceeds OSHA & WCB requirements.
- Accommodates: parapets & cant strips
- Provides unobstructed access to roof edge.
- **PR 100** are easy to install.
- Light weight & rugged.
- Tested to provide maximum safety.



88 Signet Drive
Weston, ON M9L 1T3
Tel: (416) 744-2050
Fax: (416) 744-4247

- Pickering, ON
- Toronto (Bloor St.), ON
- Toronto (Wade Ave.), ON
- Weston (Weston Rd.), ON
- Weston (Signet Dr.), ON
- Barrie, ON
- Oakville, ON
- Hamilton, ON
- London, ON
- Edmonton, AB
- Calgary, AB
- Winnipeg, MB
- Bensenville (Chicago), IL

WEB SITE: www.spamarathonroofing.com



STEP ONE:

Adjust the
Compression Bracket
to fit the size of the
parapet.



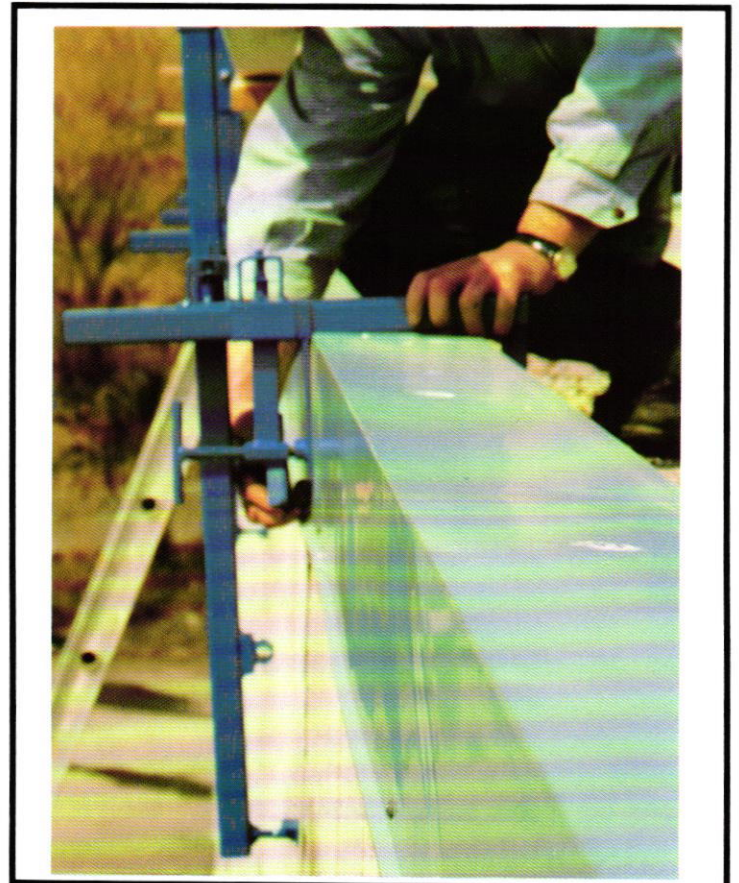
STEP TWO:

Lock in pin and do
final adjustment with
threaded Tightener.



STEP THREE:

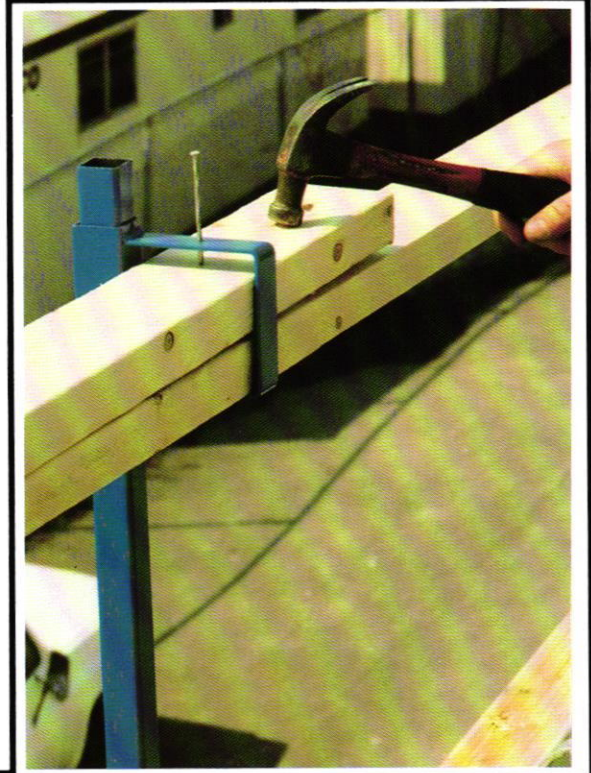
Install Stanchion and Stanchion Guide tight to
the outside of parapet wall.
Insure Pin is locked in place.
Turn top Adjustment Stop to touch the outside
of the parapet wall.



REPEAT STEP THREE at each Compression Bracket.



Note: Maximum spacing for Stanchions is eight foot on centre.



STEP FOUR:

Install 2" x 4" guardrails through Adjustable guides. Fasten 2" x 4"s to Adjustable Guides through holes provided. Adjust the height of guardrails if required to meet the requirements of safety regulations.



The end result is an efficient and practical perimeter guardrail that allows you to work right to the edge of the roof.

When using **PR 100 SAFETY ROOF RAIL** on a building roof where there is no parapet, simply remove the compression bracket and fasten the wall mount bracket by using 1/4" x 2" wedge anchors. Insert the stanchion and repeat the same steps as with the compression bracket.

When using **PR100** on a metal clad building simply, mount the wall mount bracket with rubber insert well nuts.



PR 100 Weighs less than 22 lbs and can be easily installed by just one person.

PR 100 SAFETY ROOF RAIL was designed by roofers for ease and practicality combined with maximum strength for use in the roofing industry.

For more information on **PR 100 SAFETY ROOF RAIL** pricing, or a distributor near you call
1-800-387-2873



88 Signet Drive
 Weston, ON M9L 1T3
 Tel: (416) 744-2050
 Fax: (416) 744-4247

- Pickering, ON
- Toronto (Bloor St.), ON
- Toronto (Wade Ave.), ON
- Weston (Weston Rd.), ON
- Weston (Signet Dr.), ON
- Barrie, ON
- Oakville, ON
- Hamilton, ON
- London, ON
- Edmonton, AB
- Calgary, AB
- Winnipeg, MB
- Bensenville (Chicago), IL

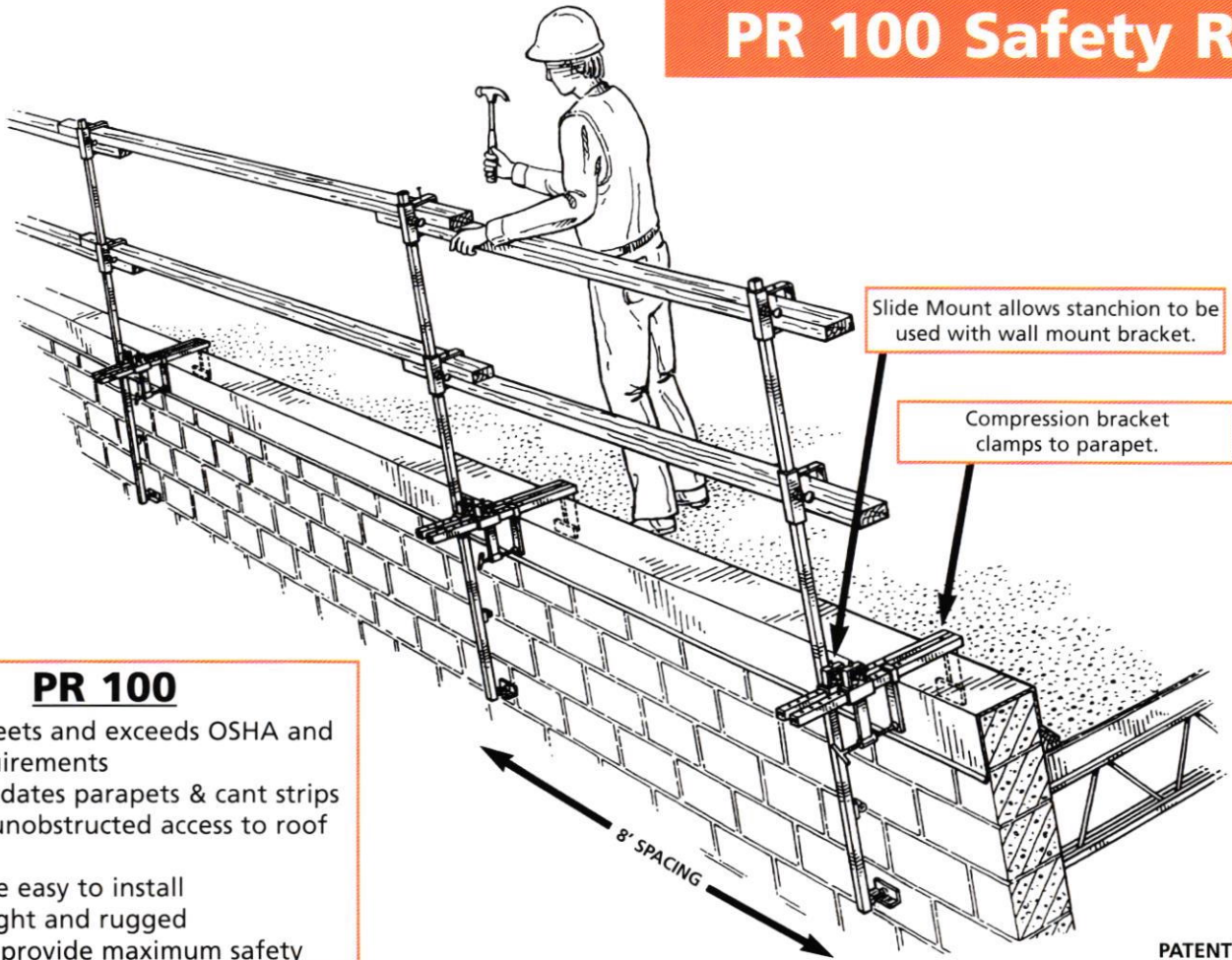
THE PR 100 SAFETY GUARDRAIL SYSTEM



THE PENTAGON

for **FLAT ROOFS**

PR 100 Safety Rail



PR 100

- PR 100 meets and exceeds OSHA and WCB requirements
- Accommodates parapets & cant strips
- Provides unobstructed access to roof edge
- PR 100 are easy to install
- Light weight and rugged
- Tested to provide maximum safety

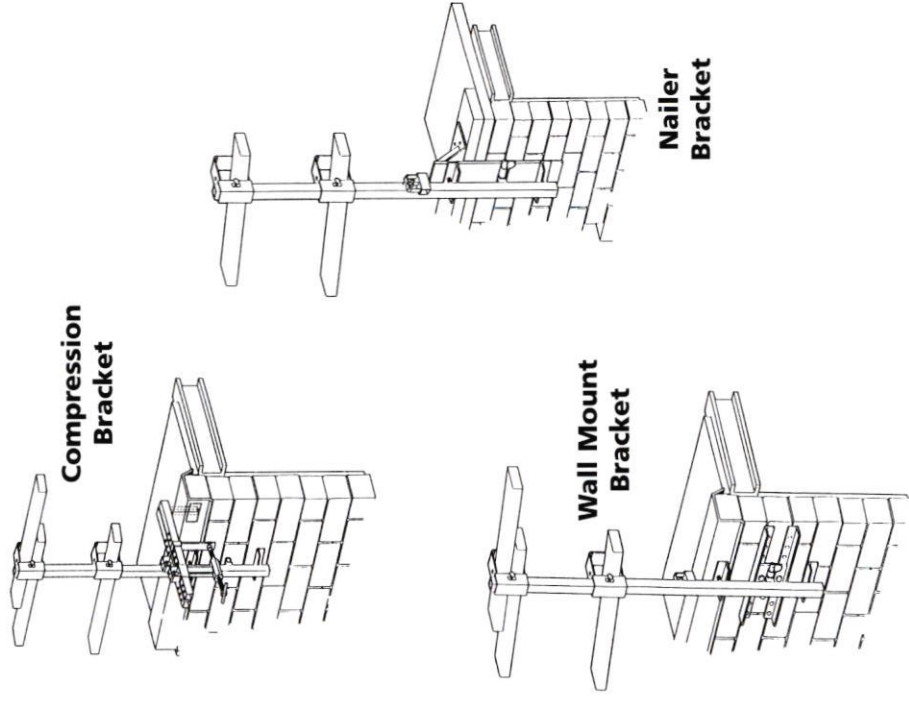
PATENT PENDING

PR 100 Safety Guardrail System

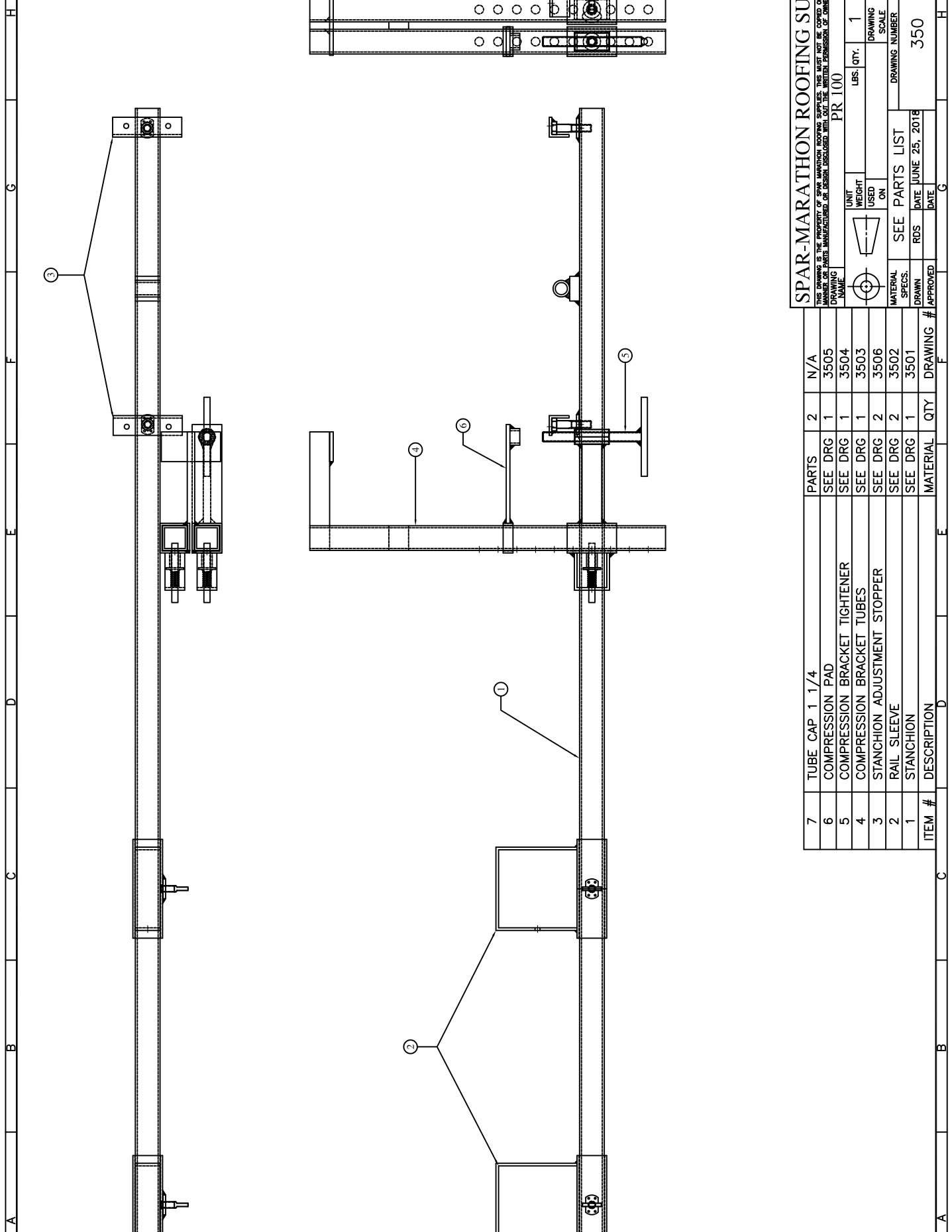
The PR 100 Guardrail System for flat roofs is comprised of a stanchion and a compression bracket. Also available are two separate mounting brackets to fit different applications. It will allow man and equipment to work up to the edge. The standard bracket is the Compression Bracket which will clamp to a parapet up to 14" wide. If the parapet is wider than 14", extensions are available to fit any width. The Stanchion has a guide welded on the side that will slide along the tube on the Compression Bracket, in toward the wall and a spring-loaded pin will lock into place. Two men can easily set up 100 ft. of guardrail in 25 minutes. The system does not have to be dismantled to install flashing and coping.

The PR 100

- meets and exceeds OSHA and WCB requirements;
- accommodates parapets and cant strips;
- provides unobstructed access to roof edge;
- is light weight and rugged;
- has been tested to provide maximum safety.



PR 100 USED AT THE PENTAGON.



SPAR-MARATHON ROOFING SUPPLIES
 THIS DRAWING IS THE PROPERTY OF SPAR-MARATHON ROOFING SUPPLIES. IT IS NOT TO BE COPIED OR REPRODUCED IN ANY FORM OR BY ANY MEANS, ELECTRONIC OR MECHANICAL, INCLUDING PHOTOCOPYING, RECORDING, OR BY ANY INFORMATION STORAGE AND RETRIEVAL SYSTEM.
 DRAWING NAME: PR 100

UNIT	WEIGHT	LBS.	QTY.	ITEM NO.
USED	ON			
SEE PARTS LIST		DRAWING NUMBER		1:3
MATERIAL SPECS.		DATE		REV.
DRAWN		RDS		JUNE 25, 2018
APPROVED		DATE		350

ITEM #	DESCRIPTION	MATERIAL	QTY	DRAWING #	APPROVED
7	TUBE CAP 1 1/4		2	N/A	
6	COMPRESSION PAD	SEE DRG	1	3505	
5	COMPRESSION BRACKET TIGHTENER	SEE DRG	1	3504	
4	COMPRESSION BRACKET TUBES	SEE DRG	1	3503	
3	STANCHION ADJUSTMENT STOPPER	SEE DRG	2	3506	
2	RAIL SLEEVE	SEE DRG	2	3502	
1	STANCHION	SEE DRG	1	3501	
		MATERIAL	QTY	DRAWING #	APPROVED