

ROOF HATCH SAFETY RAIL SYSTEM

INSTRUCTION AND SAFETY INFORMATION

Read before using / installation

WARNING

This equipment is not to be used on worksites that are not in compliance with the OHS/OSHA standards. Special emphasis shall be placed on, but not limited to,
In Ontario, Canada: Section 26 to 26.10 and 207
In USA: Part 1926, Subpart M, Section 1926.500, 1926.501, 1926.502 and 1926.503
Regarding:

1. Guarding floor openings and holes.
2. Guarding roof edges by use of motion stopping safety systems (MSS) and properly installed warning line systems.
3. Providing employee training as specified.

Misuse of this equipment may result in damage or injury. It is the responsibility of the purchaser to ensure that these instructions are given to the persons who will actually be using / installing the equipment.

ASSEMBLING THE SAFETY RAIL SYSTEM

Follow assembly instructions shown in Assembly Drawing.

SAFETY PRECAUTIONS

The employer shall permit only those employees qualified by training or experience to install / use the equipment.

Regulations governing the use, selection, and maintenance of personal protective and lifesaving equipment as stated in safety regulations shall be followed.

CORPORATE OFFICE
1360 Bloor Street West
Toronto, ON M6H 1P2
Tel: (416) 534-8421
Fax: (416) 534-9373

55 Wade Avenue
Toronto, ON M6H 1P5
Tel: (416) 534-8951
Fax: (416) 534-1451

3689 Weston Road
Weston, ON M9L 1W4
Tel: (416) 745-4111
Fax: (416) 745-6773

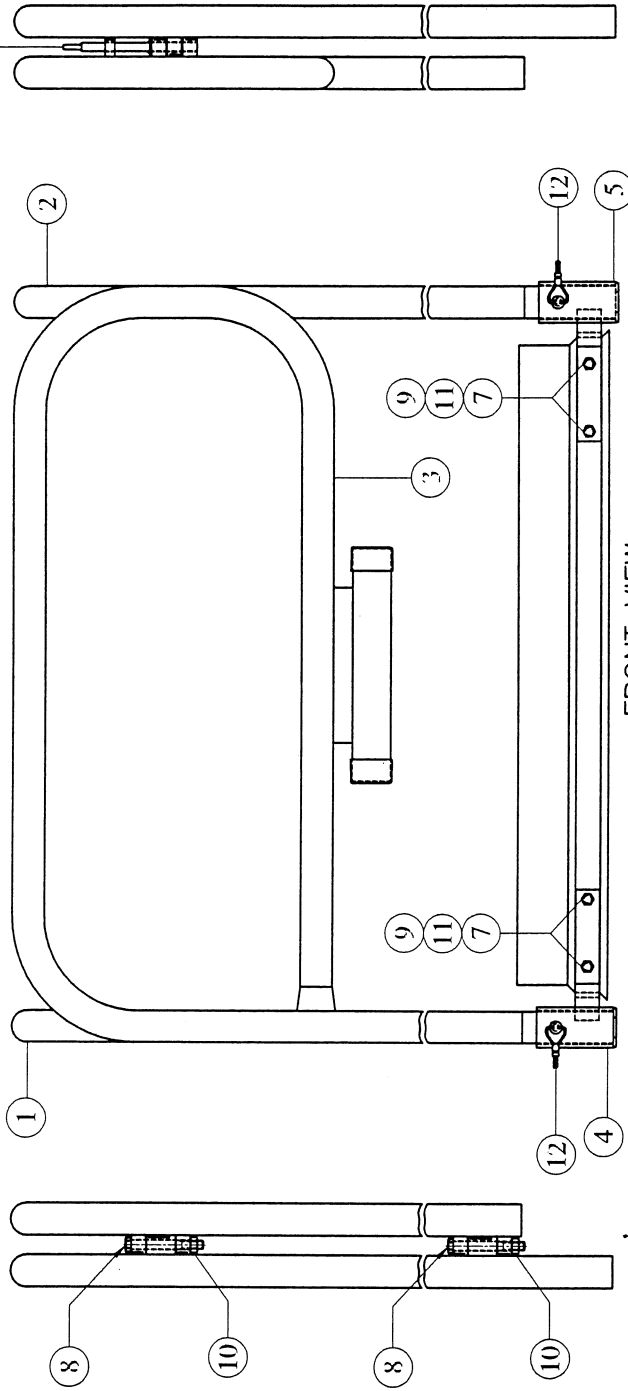
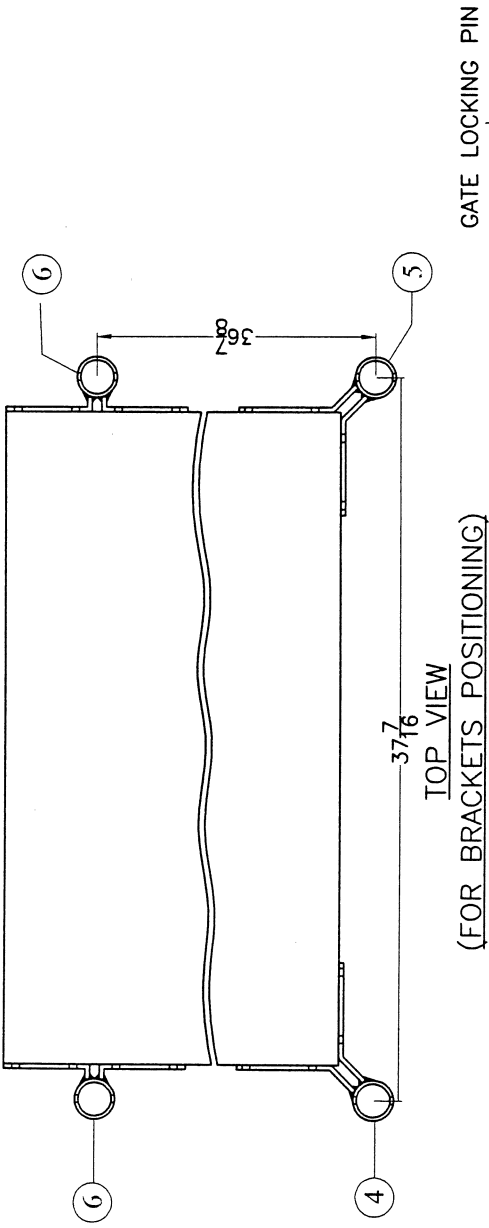
1028 Toy Avenue
Pickering, ON L1W 3P1
Tel: (905) 426-4443
Fax: (905) 426-1143

88 Signet Drive
Weston, ON M9L 1T3
Tel: (416) 744-2050
Fax: (416) 744-4247

2212 Wycroft Rd., #8 & #9
Oakville, ON L6L 5V6
Tel: (905) 825-0034
Fax: (905) 825-9606

10A Keenleyside Street
Winnipeg, MB R2L 2B9
Tel: (204) 338-7613
Fax: (204) 338-7552

**RACE ROOFING
SUPPLIES LIMITED**
330 Meyer Road
Bensenville, IL 60106
Tel: (630) 766-8434
Fax: (630) 766-8461



ASSEMBLY INSTRUCTIONS:

1. DRILL 13/32 HOLES IN ROOF HATCH AT 16 PLACES TO SUIT BRACKETS HOLES
2. SET THE BRACKETS, 3/8 BOLTS, LOCK WASHERS IN POSITION AND TIGHTEN THE NUTS
3. SET THE SIDE RAILINGS AND PUT THE LOCK PINS IN POSITION
4. SET THE RAILING GATE, 1/2 BOLTS IN POSITION AND TIGHTEN NUTS
5. CLOSE THE GATE AND SET THE GATE LOCKING PIN IN POSITION

ITEM #	DESCRIPTION	QTY
12	SQUARE BACK LOCK PIN	4
11	LOCK WASHER 3/8	16
10	HEX NUT 1/2 UNC	2
9	HEX NUT 3/8 UNC	16
8	HEX BOLT 1/2 UNC X 4 LG	2
7	HEX BOLT 3/8 UNC X 1 LG	16
6	REAR BRACKET	2
5	FRONT BRACKET (RIGHT)	1
4	FRONT BRACKET (LEFT)	1
3	RAILING GATE	1
2	SIDE RAILING (RIGHT)	1
1	SIDE RAILING (LEFT)	1

SPAR-MARATHON ROOFING SUPPLIES			
THIS DRAWING IS THE PROPERTY OF SPAR-MARATHON ROOFING SUPPLIES. THIS MUST NOT BE COPIED OR REPRODUCED IN ANY MANNER OR PARTS MANUFACTURED OR DESIGN DISCLOSED WITHOUT THE WRITTEN PERMISSION OF OWNER.			
DRAWING NAME: ROOF HATCH SAFETY RAIL SYSTEM			
UNIT	LBS.	QTY.	ITEM NO.
WEIGHT USED ON			
ROOF HATCH			DRAWING SCALE: 1:10
			DRAWING NUMBER
MATERIAL			
SPECS.			
DRAWN	RDS	DATE	JUL 14, 2005
APPROVED		DATE	
		DRAWING NUMBER	13.1
		REV.	0