

SR-2 SAFETY RAIL SYSTEM

INSTRUCTION AND SAFETY INFORMATION

Read before using / installation.



This equipment is not to be used on worksites that are not in compliance with the following standards, USA, OSHA 1926 Subpart M-Fall Protection, 1926.500, 1926.501, 1926.502 and 1926.503. Ontario, Canada, OHSA, Sections 26(1)(2)(3) and 207.

Regarding:

1. Guarding floor openings and holes.
2. Guarding roof edges by use of motion stopping safety systems (MSS) and properly installed warning line systems.
3. Providing employee training as specified.

The use of individual pieces of this guardrail system **does not** constitute an approved guardrail system. A 5 feet outrigger is required at the beginning, end and any interruption of continuous sections. Misuse of this equipment may result in damage or injury. It is the responsibility of the purchaser to ensure that these instructions are given to the people who will be using the equipment.

SAFETY PRECAUTIONS

The employer shall permit only those employees qualified by training or experience to operate the equipment.

The employer shall instruct each employee in the recognition and avoidance of unsafe conditions and the regulations applicable to the work environment, to control or eliminate any hazards or other exposure to illness or injury.

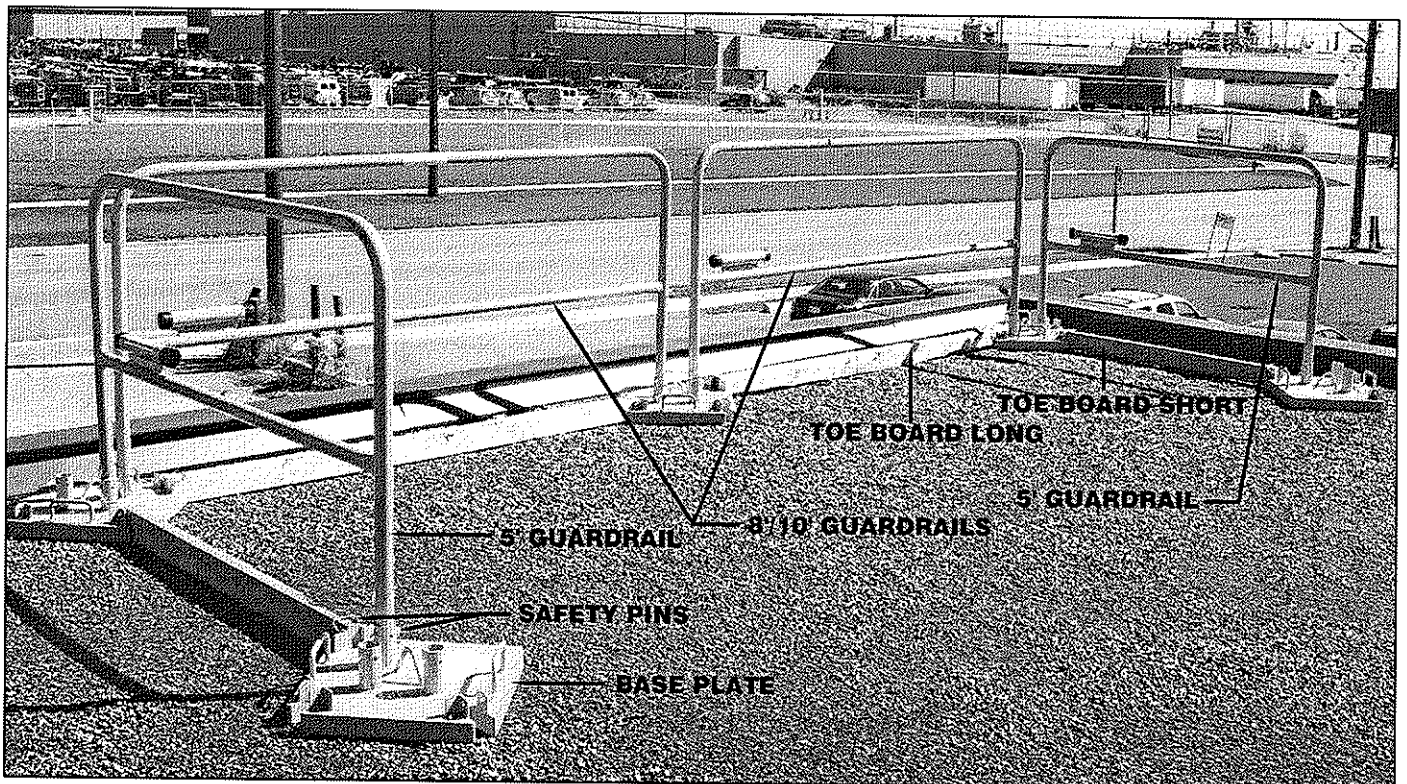
Regulations governing the use, selection, and maintenance of personal protective and lifesaving equipment as stated in safety regulations shall be followed.

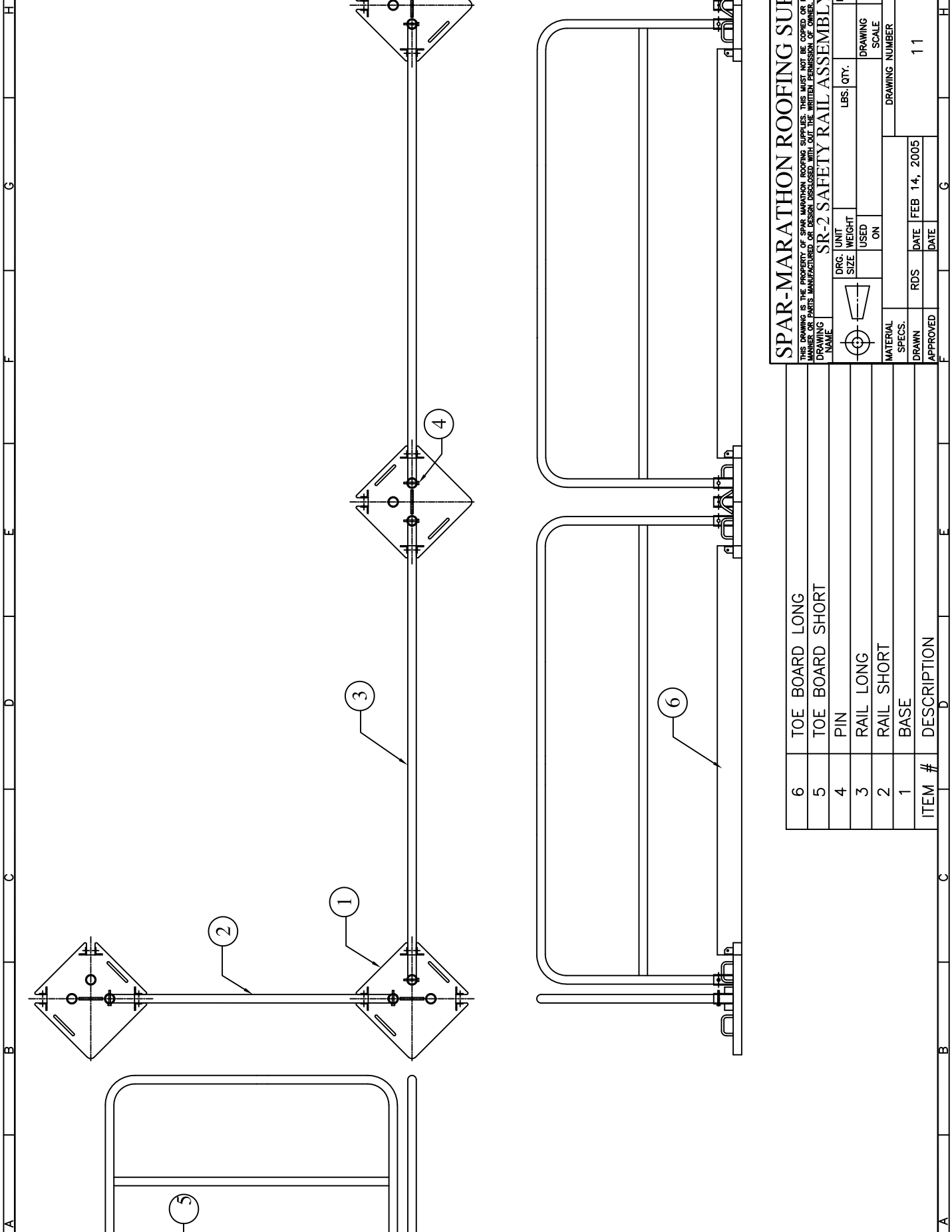
Contd./2

3689 Weston Road Weston, ON, Canada M9L 1W4 P: (416) 745-4111 F: (416) 745-6773	<ul style="list-style-type: none"> • Pickering, ON • Toronto (Bloor St.), ON • Toronto (Wade Ave.), ON 	<ul style="list-style-type: none"> • Weston (Weston Rd.), ON • Weston (Signet Dr.), ON • Barrie, ON 	<ul style="list-style-type: none"> • Oakville, ON • Hamilton, ON • London, ON 	<ul style="list-style-type: none"> • Edmonton, AB • Calgary, AB • Winnipeg, MB
--	---	--	--	---

ASSEMBLING SR-2 SAFETY RAIL SYSTEM

1. Place Base Plates along the roof edge spacing as per the size of Guardrail Section (8'/10') with one at each end (for 5') at 90 degree to the roof edge.
2. Mount 8'/10' Guardrails onto the Base Plates along the roof edge. Mount 5' Guardrail onto the Base Plates at 90 degree to the front main Guardrail at each end.
3. Align holes and insert Safety Pins at all connections.
4. Insert construction grade wood Toe Boards 2 X 4 (Minimum 3 ½ inches high) into the receptacles of all Base Plates and fasten with Safety Pins.





SPAR-MARATHON ROOFING SUPPLIES
 THIS DRAWING IS THE PROPERTY OF SPAR MARATHON ROOFING SUPPLIES. THIS MUST NOT BE COPIED OR REPRODUCED IN ANY MANNER OR PARTS MANUFACTURED OR DESIGN DISCLOSED WITHOUT THE WRITTEN PERMISSION OF OWNER.

DRAWING NAME		SR-2 SAFETY RAIL ASSEMBLY		ITEM NO.		DRAWING SCALE		REV.	
DRG. SIZE	UNIT WEIGHT	LBS.	QTY.	USED	ON	DRAWING NUMBER		1:27	
MATERIAL SPECS.		DATE		DATE		DRAWING NUMBER		REV.	
DRAWN		RDS	FEB 14, 2005	DATE		DRAWING NUMBER		11	
APPROVED		DATE		DATE		DRAWING NUMBER		0	

ITEM #	DESCRIPTION
6	TOE BOARD LONG
5	TOE BOARD SHORT
4	PIN
3	RAIL LONG
2	RAIL SHORT
1	BASE